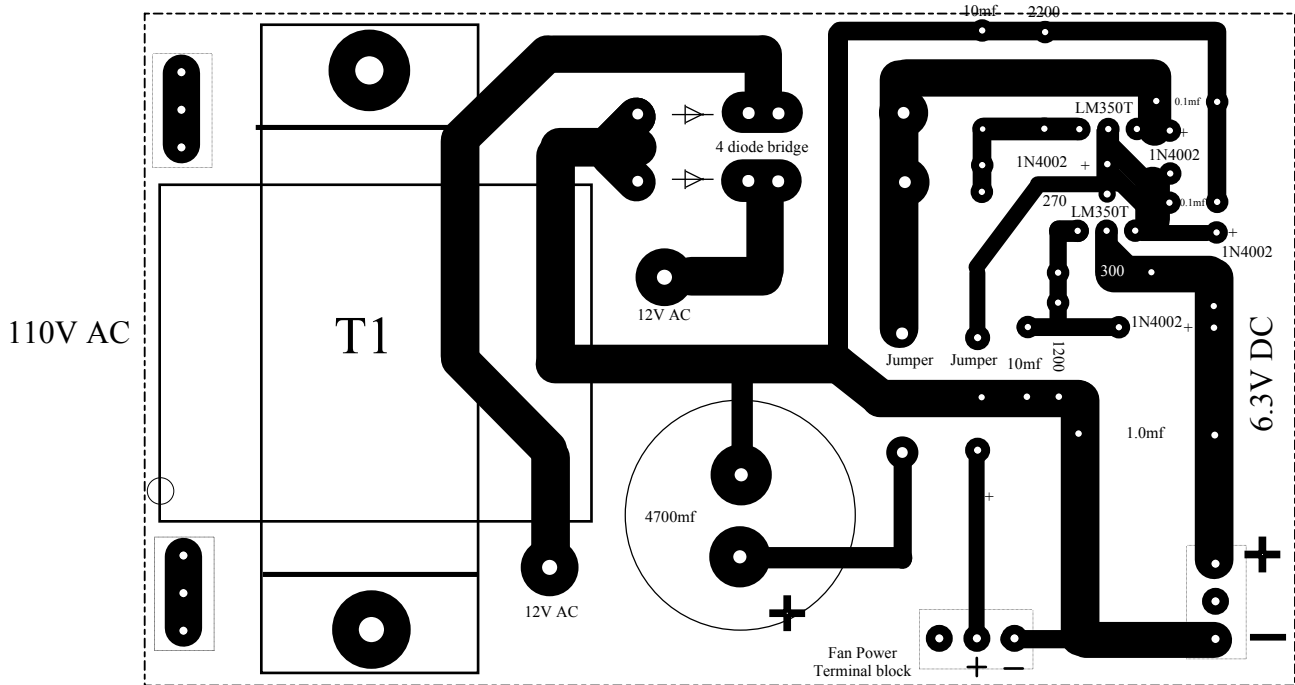


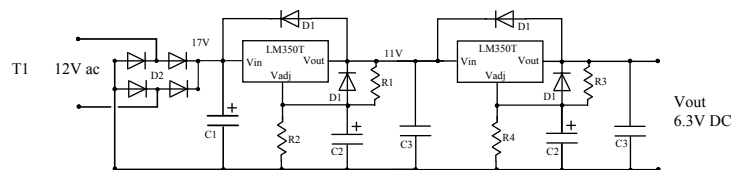
6.3 Volt, 2 Amp Power Supply

Components on top of board, traces on bottom

Viewing top of board as if board is transparent



T1 = 12V, 3A Transformer



- D1 - 1N4002 (4)
- D2 - 1N5820 (4)
- C1 - 4700 microF (electrolytic)
- C2 - 10 microF (electrolytic)
- C3 - 0.1 microF
- C4 - 1.0 microF
- R1 - 270 Ohms, R2 - 2.2K Ohms
- R3 - 300 Ohms, R4 - 1.2K Ohms

